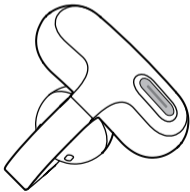
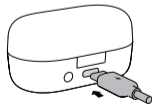
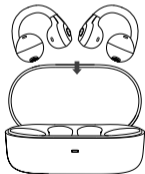
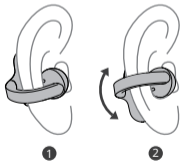


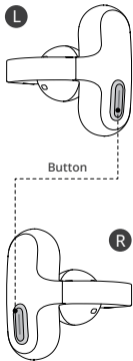
amazfit



UP



Controlling Earbuds



Actions		Control	
●	Press any earbud button once	▶/	Play or pause music
		☎	Answer the phone
● ●	Press any earbud button twice in succession	☎	Hang up or reject the call
		⏮	Next song
● ● ●	Press any earbud button three times consecutively	🗣️	Wake up the voice assistant
▬	Press and hold the right button to gradually increase the volume. Release the button when the desired volume is reached	🔊 +	Volume Up
▬	Press and hold the left button to gradually decrease the volume. Release the button when the desired volume is reached	🔊 -	Volume Down

Basic Specifications

Model number: A2427

Battery capacity: Earbuds 50 mAh; Charging case 440 mAh

Charging case input: 5 V DC 0.8 A

Charging case output: 5 V DC 0.3 A

Charging case power: 4 W

Wireless connection: Bluetooth 5.3

Bluetooth frequency: 2402–2480 MHz

Bluetooth output power: 3 dBm

Waterproof and dustproof rating: earbuds IPX4

Operating temperature: 0°C to 45°C

HVIN: A2427-L, A2427-R

Device requirements: Devices installed with Android 7.0 or iOS 14.0 or above OS versions



The Bluetooth® word mark and logos are registered trademarks owned by Bluetooth SIG, Inc. and any use of such marks by Anhui Huami Information Technology Co., Ltd. is under license. Other trademarks and trade names are those of their respective owners.

Safety Notice

Before using and operating this product, please read and follow the precautions below to ensure optimal product performance and avoid dangerous or illegal situations.



High sound pressure.
Hearing damage/risk.
Do not listen at high volume levels for long periods.

1. Please use a power adapter that complies with regulations for charging.
2. Choking hazard: Keep the product away from children and pets.
3. Allergy notice: If any symptoms occur, stop using the product and consult a doctor.
4. Some components and radios in this product may generate electromagnetic fields. Maintain a safe distance from medical devices.
5. Comply with relevant regulations in your area or country, and use this product with caution while driving.

Battery Safety

1. This device is equipped with a built-in battery that cannot be removed or replaced. Do not disassemble or modify the battery by yourself.
2. Disposal of a battery into fire or a hot oven, or mechanically crushing or cutting of a battery, that can result in an explosion.
3. Leaving a battery in an extremely high temperature surrounding environment can result in an explosion or the leakage of flammable liquid or gas.
4. A battery subjected to extremely low air pressure may result in an explosion or the leakage of flammable liquid or gas.
5. In case of prolonged product inactivity, to prevent battery damage from over-discharge, it is advisable to fully charge every six months before storing.

Warranty and Return Policy

The Amazfit Limited Warranty covers Amazfit products against manufacturing defects beginning on the original purchase date. The warranty period is 12 months or another specified period as the applicable consumer laws in the consumer's country of purchase require. Our warranty is in addition to rights provided by applicable consumer laws.

Official website: www.amazfit.com

Please check the FAQ on the website for troubleshooting: support.amazfit.com/en/product-list

Disposal and Recycling Information

All products bearing this symbol are waste electrical and electronic equipment which comply with the Reduction of Hazardous Substances in the e-waste (Management) Rules, and should not be mixed with unsorted household waste. Instead, you should protect human health and the environment by handing over your waste equipment to a designated collection point for the recycling of waste electrical and electronic equipment, appointed by the government or local authorities. Correct disposal and recycling will help prevent potential negative consequences to the environment and human health. Please contact the retailer or local authorities for more information about the location as well as terms and conditions of such collection points.

Certifications and Safety Approvals

Hereby, Anhui Huami Information Technology Co., Ltd. declares that the radio device type A2427 is in compliance with Directive 2014/53/EU. The full text of the EU declaration of conformity is available at the following internet address: <https://t.zepp.com/t/a2427>

The product is in compliance with UK PSTI regulations, the full text of declaration of conformity is available at the following internet address: <https://src.zepp.com/updates/index.html>

Manufactured by: AnHui Huami Information Technology Co., Ltd.
Address: See Packaging

Regulatory Notice

This device complies with part 15 of the FCC Rules. Operation is subject to the following two conditions: (1) this device may not cause harmful interference, and (2) this device must accept any interference received, including interference that may cause undesired operation.

FCC ID: 2AC8UA2427

Any changes or modifications not expressly approved by the party responsible for compliance could void the user's authority to operate the equipment.

Note: This equipment has been tested and found to comply with the limits for a Class B digital device, pursuant to part 15 of the FCC Rules. These limits are designed to provide reasonable protection against harmful interference in a residential installation. This equipment generates, uses and can radiate radio frequency energy and, if not installed and used in accordance with the instructions, may cause harmful interference to radio communications. However, there is no guarantee that interference will not occur in a particular installation. If this equipment does cause harmful interference to radio or television reception, which can be determined by turning the equipment off and on, the user is encouraged to try to correct the interference by one or more of the following measures:

- Reorient or relocate the receiving antenna.
- Increase the separation between the equipment and receiver.

- Connect the equipment into an outlet on a circuit different from that to which the receiver is connected.
- Consult the dealer or an experienced radio/TV technician for help.

The device has been evaluated to meet general RF exposure requirement. The device can be used in portable exposure condition without restriction.

This device contains licence-exempt transmitter(s)/receiver(s) that comply with Innovation, Science and Economic Development Canada's licence-exempt RSS(s). Operation is subject to the following two conditions:

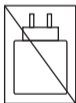
- (1) This device may not cause interference.
- (2) This device must accept any interference, including interference that may cause undesired operation of the device.

Le présent appareil est conforme aux CNR d'Industrie Canada applicables aux appareils radioexempts de licence. L'exploitation est autorisée aux deux conditions suivantes :

- (1) l'appareil ne doit pas produire de brouillage, et
- (2) l'utilisateur de l'appareil doit accepter tout brouillage radioélectrique subi, même si le brouillage est susceptible d'en compromettre le fonctionnement.

IC: 21806-A2427

CAN ICES-003 (B)/NMB-003(B)



PAP 22

PAP

Raccolta di carta



FR

Cet appareil et sa batterie se recyclent

À DÉPOSER EN MAGASIN



À DÉPOSER EN DÉCHÈTERIE



OU

Points de collecte sur www.quefairedesdechets.fr
Privilégiez la réparation ou le don de votre appareil !



FR

ÉLÉMENTS D'EMBALLAGE À SÉPARER ET À DÉPOSER DANS LE BAC DE TRI



XXXXXXXXXX-VX.X
XXXX